

RAKOCZY®
RELIABLE WARMTH

PELLET boilers

firemax

10-30 kW



02/2023

rakoczy.pl

About the company



RAKOCZY headquarters and production plant in Stalowa Wola

RAKOCZY BOILERS Heat your home cleanly and economically

A brand with tradition

The Rakoczy brand is one of the oldest boiler brands in Poland. Its history began in 1968, so over 50 years ago. For half a century of its existence, the Rakoczy brand has evolved from a small, local, family-owned company to one of the leading manufacturers and exporters of modern solid fuel central heating boilers. In recent years, more than half of the produced Rakoczy Stal's boilers are supplied to the demanding markets of Western Europe, including Germany, Austria, Italy, France and Ireland. Our products have received over a dozen prestigious awards and honourable mentions at Polish and international events.

Brand development

On 6th August 2021, Rakoczy Stal became part of the international Hargassner group - one of the leading European manufacturers of heating systems. The acquisition of Rakoczy Stal is an important element of the Hargassner group's business strategy and is a part of its development plans on European markets. Qualified personnel, a modern production plant in Stalowa Wola as well as high reputation and contacts on the local market, combined with the knowledge and experience of the Hargassner group, constitute a great opportunity for further dynamic development of Rakoczy Stal and the Rakoczy brand.

Company features



Production

- more than 50 years of experience
- highly qualified staff
- new, efficient production line
- modern production technologies



Trade

- experienced, mobile customer managers
- professional consulting
- high standards of business customer service
- constant availability of boilers
- quick realization of orders
- continuous increase of the number of exhibition points"



Service

- two options of warranty: basic 5-year and 8-year with paid maintenance
- experienced service technicians
- professional support and consulting
- quick response
- possibility of electronic service request

What makes our product different?



RAKOCZY headquarters and production plant in Stalowa Wola

Why FIREMAX?

- Fully configurable according to the customer's needs in terms of power, capacity and design of the tank
- Simplicity of boiler operation - the easiest boiler to use
- Very installer-friendly boiler - easy to install
- Possibility to divide the boiler into smaller modules, which are easy to bring into the boiler room, which makes its installation easier
- Facilitation of boiler operation, i.e. openable hopper flap with gas actuator, low loading edge, maximum simplification of service operations

Content

- 4 Your benefits
- 6 General characteristics
- 7 Boiler control
- 8 Viewing cross-section
- 9 PLUS versions
- 10 STANDARD versions
- 11 STANDARD versions PSP and FRONT
- 12 Accessories. Recommended sets
- 14 CH installation schemes
- 16 Dimensions

Awards and prizes



Showroom in the company's headquarters in Stalowa Wola

* Boilers number 1 in the largest all-Poland popularity poll of brands and products Customer Laurels in the category: Product quality - central heating boilers
** Honorable mention award Our Good Podkarpackie 2022 for FM 190 plus 20 kW boiler
*** Honorable mention in the TV project Star of the Ecological Industry for Rakoczy brand and Firemax boiler

Your benefits - pellet

Heating with wood pellet

Advantages		Benefits
Provides high comfort and convenience of use	>	Comfort and convenience
Full automation of the process (pellet burning is reduced to loading the boiler hopper with fuel, and after firing, removing the ash)	>	Save time, convenience
Fuel of the future	>	Safety and security of use in the future
Eco-friendly fuel	>	Caring for the environment
Fuel from energetically and ecologically valuable post-production waste	>	Recycling of wood waste
Waste from the combustion process, or ash, can be used to fertilize plants	>	Problem-free utilization of waste of the combustion process, in addition, has a deacidifying effect on the soil
Clean fuel and the use process	>	Cleanliness, neatness in boiler room
A fuel that belongs to the renewable ones, because it is made from wood waste or fast-growing plants	>	Heating in harmony with nature



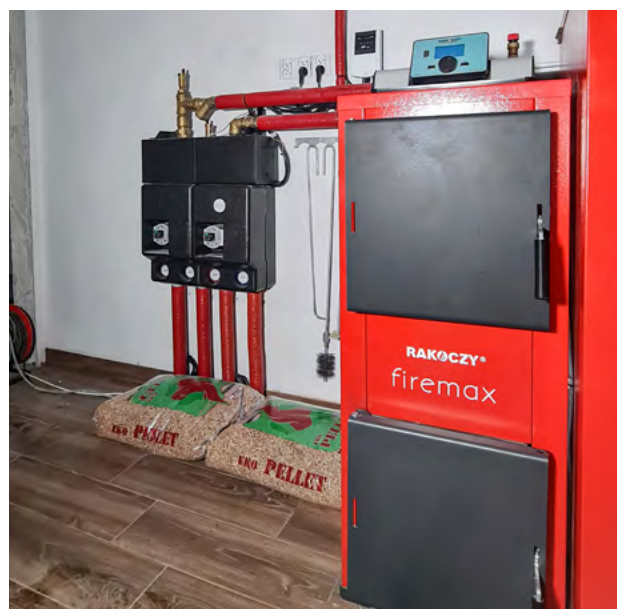
Wood pellets are a renewable energy source!

When burning wood pellets for home heating, as much CO₂ is emitted into the atmosphere as the tree absorbed in the process of photosynthesis. This makes the carbon dioxide balance zero!

Recommendation

„We have been satisfied owners of the Rakoczy Firemax 15 kW 300 plus boiler for more than two years. The device is practically maintenance-free and copes with our 170 square meter house. We opted for surface heating, a decision we do not regret, as well as the purchase of the Rakoczy boiler.”

Mr. and Mrs. Katarzyna and Damian
from near Stalowa Wola



Your benefits - central heating boiler

Firemax boiler heating

Advantages		Benefits
Convenient large hopper depending on the configuration chosen by the customer	>	Long operating time on a single load (up to 7 days)*
Maximum ease of use (both the device itself and its controller)	>	Ease of use
Compact device dimensions and divisibility into modules during transport	>	It takes up a small space in the boiler room and is easy to install
Compact and durable design	>	Durability of the device
Minimalist, aesthetic and modern design	>	Can also be installed in the living area
Low dust emissions (up to 30 kW less than 20mg/m ³)	>	More care for the environment and a higher subsidy in the government's „Clean Air” program
Modern combustion and burner grate cleaning process	>	Increased combustion efficiency and maintenance activities reduced to a minimum
Core auger feeder to ensure the highest precision of the fed fuel dose	>	No need for cumbersome measuring of feeder performance (weighing of pellets)
V-shaped burner grate design	>	Ease of pellet ignition with minimal boiler output
Very good accessibility to the inside of the exchanger during cleaning	>	Main operations performed from the front of the boiler
Large capacity combustion chamber/ash box	>	Significant extension of intervals between necessary ash removal
Solutions to protect against flame backflow, i.e. internal feeder and burner temperature sensor	>	Safety in use

* Dependent on, among other things, the installer's proper choice of boiler, the heating area, how the building is insulated, the quality of the fuel used

Recommendation

„I use a Firemax 25 kW boiler. The boiler heats a single-family house of 250 m² with high rooms (up to 5m). Only floor heating plus a 150l DHW tank. I am aware of the slight oversizing of the boiler, but the control with PID operation copes perfectly and selects the appropriate power for which there is a demand. The Firemax device means cleanliness in the boiler room and warmth in the house. I have been using it for a year without any breakdown. A big plus is the responsiveness of the service, which helps to set the parameters appropriately so that the boiler works in optimal conditions.”

Mr. Krzysztof from near Wrocław



General characteristics

firemax

Compact, automatic wood pellet boiler, available in several configurations



Up to 8 years of warranty*



Compact dimensions



Automatic ignition



Heat-resistant ceramics



Automatic burner grates cleaning



Several hopper configurations

A+



Wood pellets of A1, A2 and B class



Increased subsidy in CLEAN AIR Program

Firemax is a boiler with a compact exchanger design which together with the feeder and the tank, forms a compact and small heating device. The boiler has a high efficiency of up to 93% and a series of functions improving the comfort of boiler operation. The cuboidal, compact flame-and-shelf heat exchanger with horizontal flue gas flow, combined with ceramic elements, ensures high efficiency in the extraction of heat from the flue gases. The boiler is equipped with a modern RH pellet burner characterised by high efficiency of burning pellets of A1, A2 and B class.

It has an aeration system for the combustion process and separate primary air nozzles and secondary air nozzles. It is equipped with a durable ceramic heater, which ensures efficient and fully automatic ignition of the boiler, as well as a mechanism for automatic cleaning from sinter and ash. Firemax is designed for installation in both open and closed systems. The boiler is available in a power range of 10-30 kW and is designed for smaller or larger area single-family houses, multi-family houses.

Technical data

Parametr	Unit	Nominal heat output				
Available nominal power	kW	10	15	20	25	30
Thermal efficiency	%	92,44	92,20	92,09	92,64	92,81
Range of power modulation	kW	2,96-10,35	4,04-15,03	5,39-20,45	6,95-25,12	8,83-30,28
Approximate heating area**	m ²	30-100	40-140	60-190	70-260	90-280
Water capacity	dm ³	51	52	80	80	80
Flue gas outake diameter	mm	160	160	160	160	160
Dust emission level	mg/m ³	17,29	15,45	16,49	17,05	15,87
Energy efficiency class	Class	A+	A+	A+	A+	A+

* Two options to choose from: basic 5-year and 8-year with paid inspections

** The area to be heated is only one of many factors to be taken into account when selecting the boiler output for a building. Among the many other factors are how the building is insulated, the climate zone in which the building is located, the purpose of the building, and the design temperature of the building

Control of the boiler

Controlling the Firemax boiler is the responsibility of the modern, dedicated ST-7110 zPID controller, which has many functions to improve the operation of the boiler.



Power modulation



Extremely simple operation



Intelligent algorithm with PID



Remote control option

1. Display panel with adjustable tilt angle
2. Control panel
3. USB port for software updates
4. Controller housing

Controller functions:

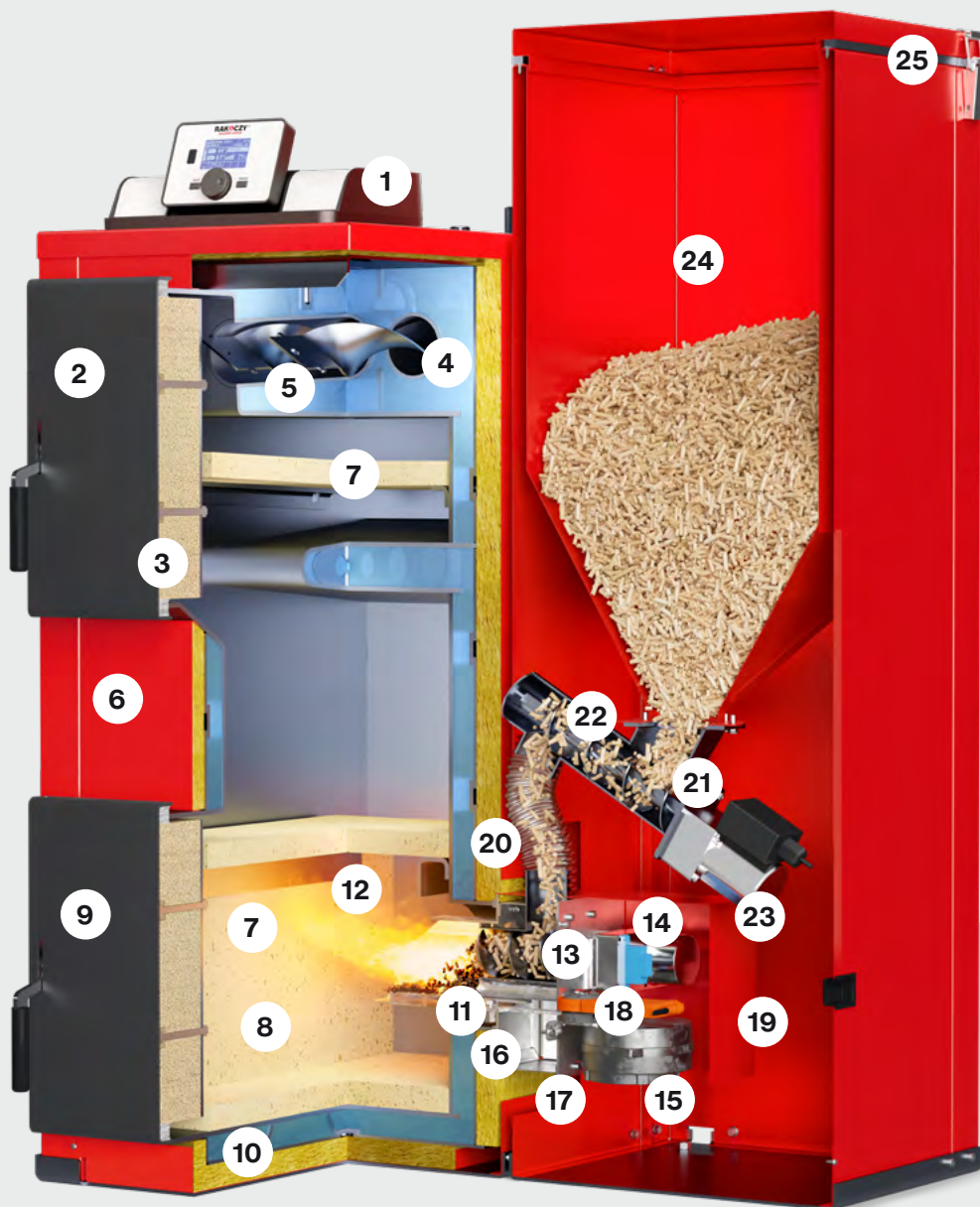
- smooth modulation of boiler power in the range of 30% - 100% (PID algorithm)
- igniter control
- feeder control
- control of the internal feeder
- control of blower fan
- control of central heating pump
- control of valve pump
- control of domestic hot water pump
- smooth control of the mixing valve
- control of additional pump with possibility of selection of device type (central heating pump, DHW pump, circulation pump, floor pump)
- built-in valve control module
- weather valve control
- weekly control of boiler, hot water valve
- cooperation with room regulator with traditional (two-state) communication or equipped with RS communication
- built-in cleaning module
- monitoring of the amount of fuel in the tank
- software update via USB
- possibility to connect ST-505 Ethernet module - allows to control functions, to monitor parameters via Internet
- possibility to connect two additional valve control modules (e.g. i-1m)
- buffer support
- support of boiler thermal protection (STB)

New features in Firemax boiler

- New boiler power available: 10 kW
- New technical solutions to improve the efficiency of the device
- In the PLUS version introduced 250 hopper with a capacity of 250 dm³
- STANDARD version introduced 190 hopper with 190 dm³ capacity, 300 tank with 300 dm³ capacity and 750 hopper with 750 dm³ capacity
- Opening flap with gas actuator in all versions of the hopper*
- Simple disassembly of the tank casing front in PLUS version to maximize ease of servicing
- **More than 100 possible device configurations!**

* Does not apply to the 750 dm³ storage hopper.

Illustrative cross-section



- | | |
|------------------------------------|--------------------------------|
| 1. Controller | 14. Internal feeder gear motor |
| 2. Upper cleanout door | 15. Blower fan |
| 3. Door insulation | 16. Air chamber |
| 4. Flame tubes | 17. Air chamber hatch |
| 5. Turbulators | 18. Grate cleaning drive |
| 6. Powder coated boiler casing | 19. Burner housing |
| 7. Heat-resistant ceramics | 20. Flexible connector |
| 8. Combustion chamber | 21. External feeder housing |
| 9. Combustion chamber door/ash box | 22. External feeder auger |
| 10. Water floor | 23. External feeder gear motor |
| 11. Burner grate | 24. Fuel hopper |
| 12. Burner chamber | 25. Fuel hopper cover |
| 13. Internal feeder auger | |

PLUS versions

Firemax - PLUS versions (with covered hopper)

Available hopper versions	PLUS	190 PLUS	250 PLUS	300 PLUS
Side of the hopper	left or right	left or right	left or right	left or right
Hopper capacity	dm ³	190	250	300
Available nominal capacities	kW	10 - 30	10 - 30	10 - 30



firemax
190 PLUS



firemax
250 PLUS



firemax
300 PLUS

PLUS versions of the Firemax boiler with a covered hopper are options for particularly demanding users.

They are characterized by an aesthetically modern appearance due to the casing powder-coated in red. This allows the boiler to be installed in a more exposed room. Versions are available in capacities of 190, 250 and 300 dm³. This allows you to choose the appropriate size of the unit. A boiler with a hopper of 190 dm³ capacity allows the boiler to be placed in a smaller boiler room, while larger ones provide exceptional comfort due to longer operation on a single filling. Another benefit is the opening flap with a gas actuator in all PLUS versions. In addition, it is adjustable, allowing for even more convenient and easier fuel filling. Besides, the hoppers are characterized by a simple disassembly of the casing front and easy access to the burner from the front of the boiler for main servicing.



1. Hopper flap with adjustable angle actuator
2. The hopper fully covered on four sides
3. Removable housing front

STANDARD Versions

Firemax - STANDARD versions (with uncovered hopper)

Available hopper versions		190	250	300
Side of the hopper	left or right	left or right	left or right	left or right
Hopper capacity	dm ³	190	250	300
Available nominal capacities	kW	10 - 30	10 - 30	10 - 30



A*

firemax
190



A*

firemax
250



A*

firemax
300

The STANDARD versions of the Firemax boiler with uncovered hopper are economic versions with a simplified hopper design.

Ideal for rooms (boiler rooms) and non-exposed areas. The biggest advantage of the STANDARD version is the easy and complete access to the burner from three sides for main servicing. Versions are available in capacities of 190, 250 and 300 dm³. This allows you to choose the right size for your appliance. A boiler with a hopper capacity of 190 dm³ allows the boiler to be located in a smaller boiler room, while the larger ones offer exceptional comfort due to longer operation on a single filling. Another advantage is the opening flap with gas actuator in all STANDARD* hopper versions. In addition, it is adjustable, which makes fuel filling even more convenient and easier.



1. Hopper flap with angle-adjustable actuator
2. Full access to burner and external burner auger

* Does not apply to the 750 dm³ storage hopper

STANDARD PSP and FRONT versions

Firemax - STANDARD PSP and FRONT versions (with extended feeding system)

Burner position		PSP (side burner)			
Available hopper versions		190	250	300	750
Burner installation side		right or left	right or left	right or left	right or left
Hopper capacity	dm ³	190	250	300	750
Available nominal capacities	kW	10 - 30	10 - 30	10 - 30	10 - 30



A*

firemax
PSP



A*

firemax
PSP 750

Burner position		FRONT (burner on the front of the boiler)		
Available hopper versions		190	250	300
Hopper capacity	dm ³	190	250	300
Available nominal capacities	kW	10 - 30	10 - 30	10 - 30



A*

firemax
FRONT

The STANDARD PSP and FRONT versions of the Firemax boiler offer all the advantages of the STANDARD version, but have the additional feature of being able to place the cylinder in a separate (adjacent) room. These versions are ideal for small boiler rooms or rooms with irregular shapes, as the extended feeding system together with the long, flexible connector allows for easy positioning of the hopper. The PSP system is characterised in particular by the availability of a very capacious 750 dm³ hopper, which is available for all available boiler outputs and will allow comfortable heating even over several days on a single filling.

Accessories

Wireless room controllers with RS communication



ST-280 + ST-260

In addition to the basic functions, it has an additional module for RS wireless communication.



ST-296 + ST-260

In addition to the basic functions, it has an additional module for RS wireless communication.



ST-281c

The wireless controller provides convenient control and monitoring of room temperature, central heating, hot water, available in white or black, for flush-mounting (in a 60 mm box).

Wireless communication modules



ST-260

Universal wireless set for controllers and regulators with RS communication, consisting of two modules.



ST-262

Wireless communication kit for two-state room controllers, consisting of a transmitter and a receiver.



ST-505

Allows remote control of boiler operation via the internet, monitoring the status of all devices in the boiler installation.



WiFi RS

Controller and module in one for remote control of the boiler via the Internet.

Wired room controllers with RS communication



ST-280

It provides convenient control and monitoring of room temperature, central heating, hot water and has a weekly heating programme function.



ST-296

Controller designed to control and monitor central heating, hot water and room temperature with a weekly heating programme function.

Additional modules



ST-431n

Thermoregulator designed for operating a three- or four-way mixing valve with the possibility of connecting an additional valve pump.



i-1m

Mixing valve module with return protection function for three-way and four-way valves, cooperates with room regulator.

Two-state controllers



ST-292

Equipped with a floor temperature sensor and smart control, momentary backlighting and heating/cooling functions. Available in wireless v2 or wired v3. Available in white or black.

Valves for closed systems



Thermal release valve DBV-1

Regulus' DBV-1 two-way thermostatic thermal release valve, designed to protect the boiler from overheating in a closed system.

Recommended sets

Benefits of installing additional accessories



Perfect temperature around the clock



Temperature differentiation depending on the room



User safety



Lower heating costs



Option to program the operating parameters in advance



Full control over heating



Convenient operation

PREMIUM sets

- Wireless room controller ST-281C + wifiRS or ST-505



ST-281C



ST-505
(Internet module)

lub



wifi RS

- Room controller wired ST-280 + wifi RS or ST-505



ST-280



ST-505
(Internet module)

lub



wifi RS

ECONOMIC Sets

- Wireless room controller ST-292v2 + wifi RS



ST-292v2



wifi RS

- Room controller wired ST-292v3



ST-292v3

- Room controller wired ST-294v1

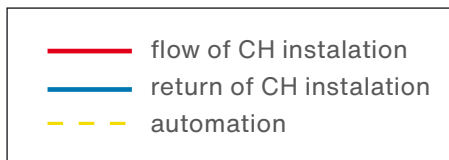


ST-294v1

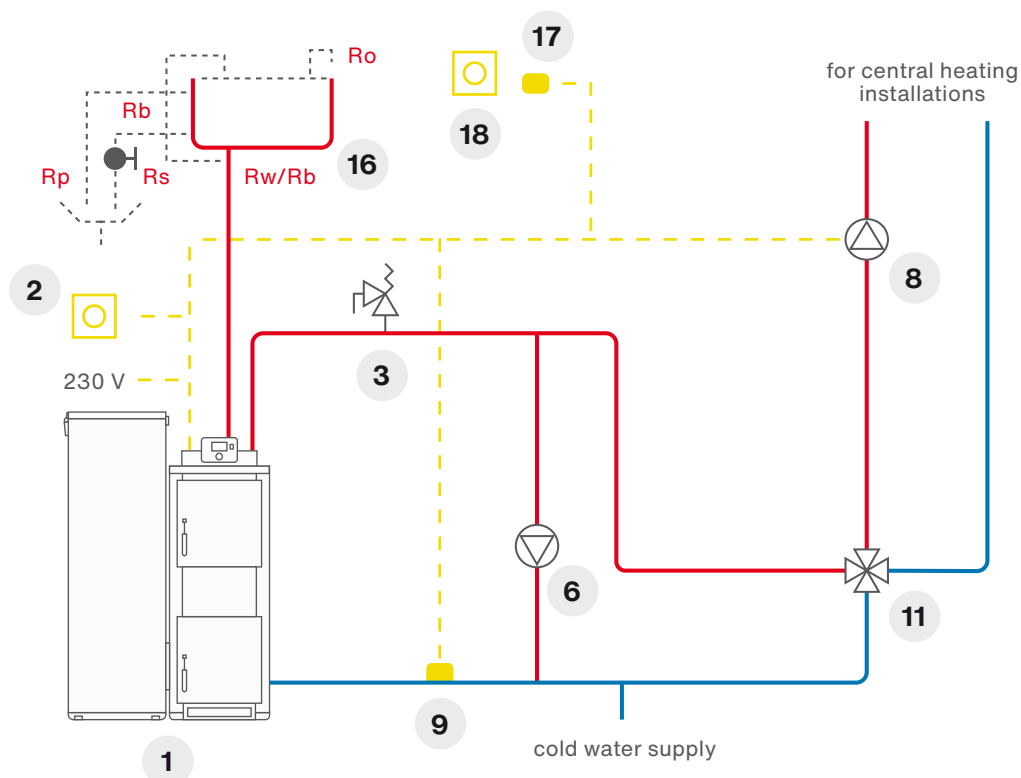
CH installation schemes

Explanations

1. Firemax boiler
2. Room regulator receiver
3. Safety valve max. 2.0 bar max.
4. Thermal release valve DBV-1 DBV
5. Drain to sewer
6. Boiler pump
7. DHW circulation pump
8. Circulation pump/valve pump
9. Return sensor
10. Three-way mixing valve
11. Four-way mixing valve
12. Diaphragm vessel
13. DHW safety group
14. DHW sensor
15. Valve sensor
16. Expansion vessel
17. External sensor
18. Room regulator transmitter/sensor



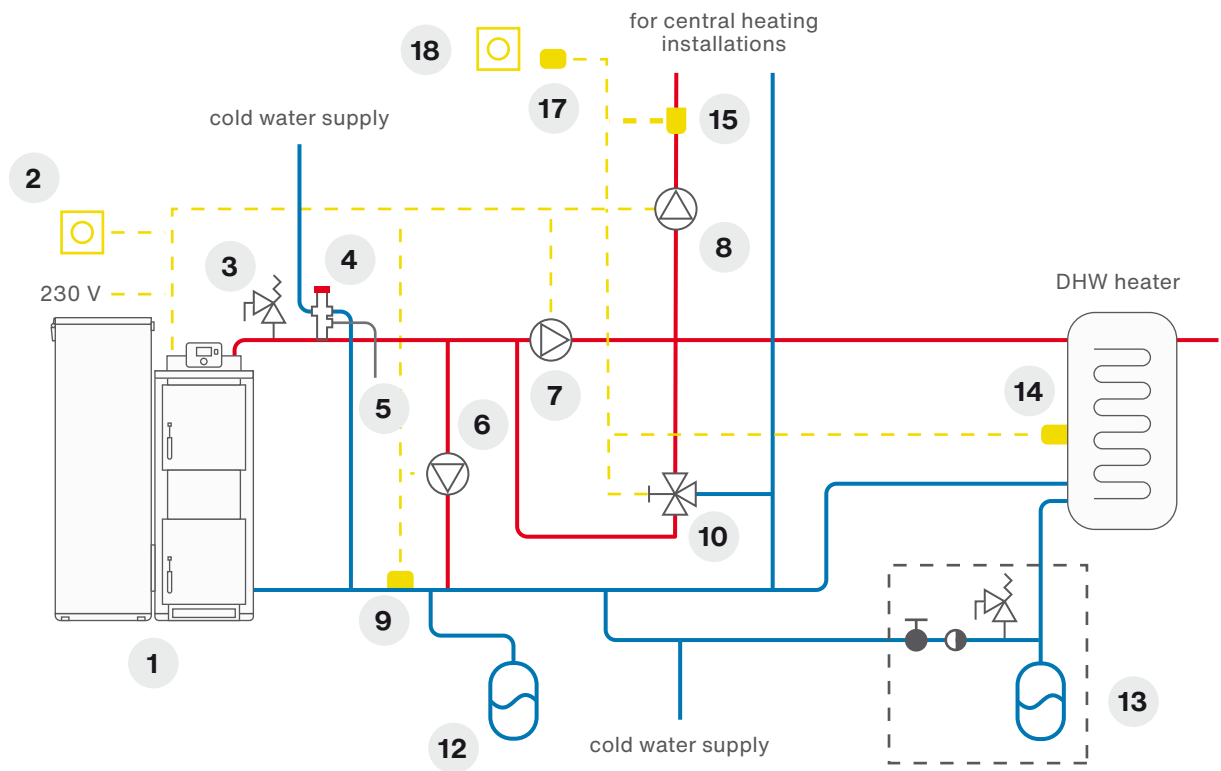
A Open central heating system with 4-way valve without DHW



Schemes of central heating with DHW

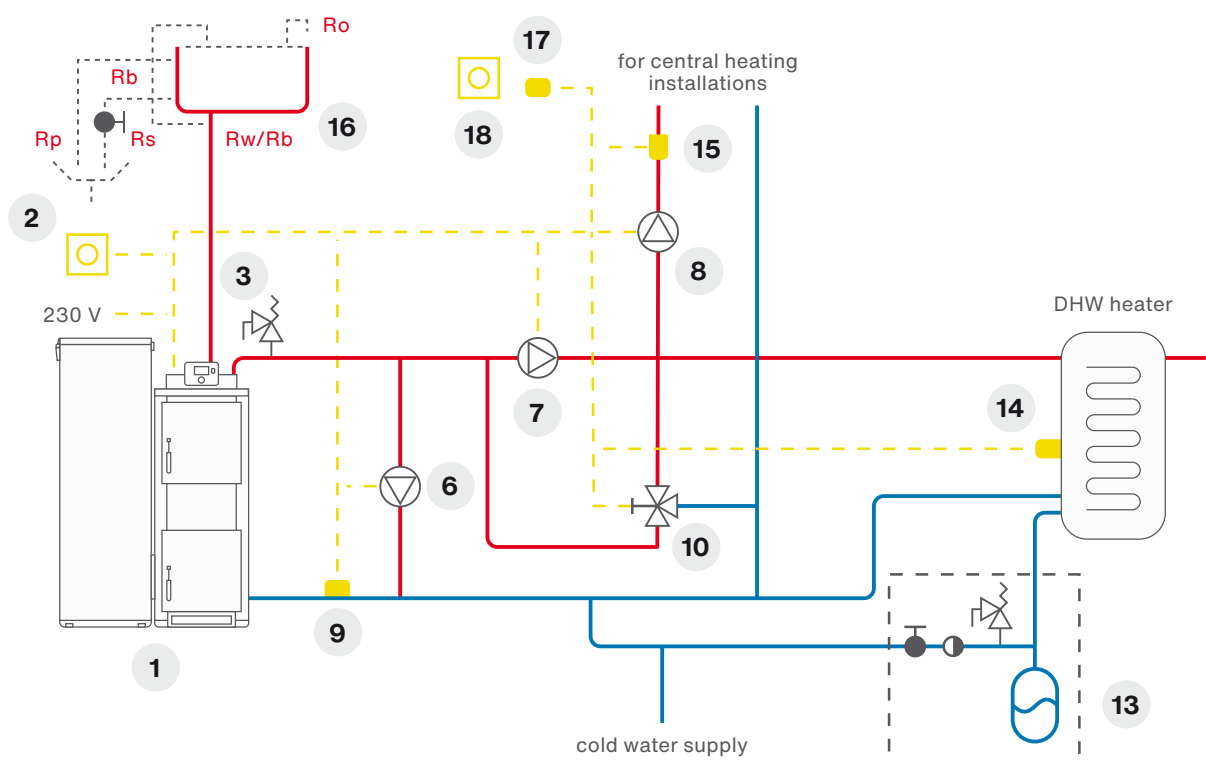
B

Closed system of central heating system with three-way valve with DHW



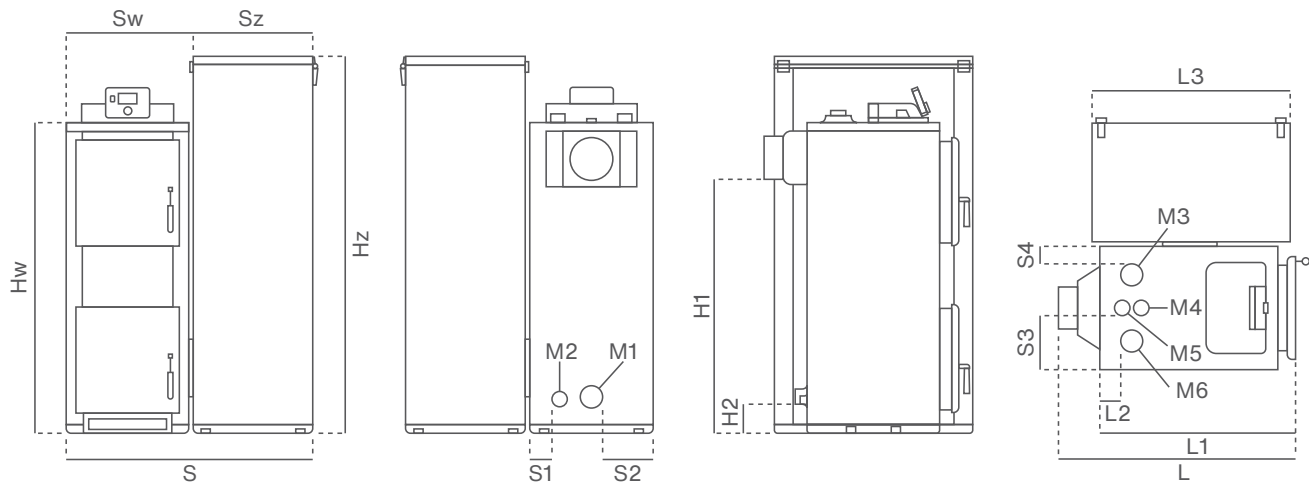
C

Open central heating installation system with three-way valve with DHW



Dimensions of PLUS version

Firemax - PLUS versions (with covered hopper)



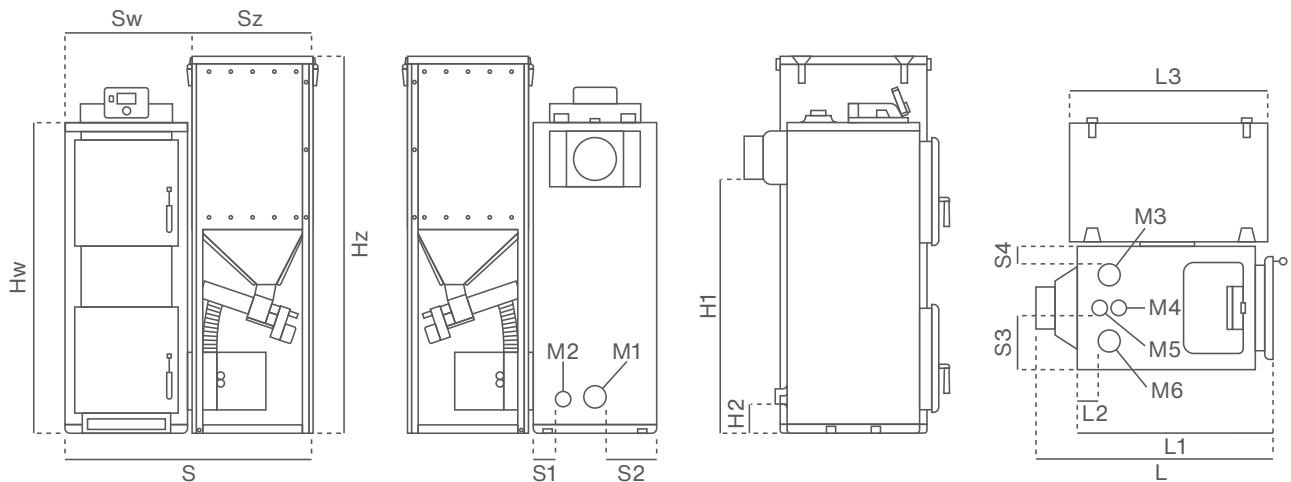
Dimensions [mm]

Power (kW)	Hopper	Weight (kg)	S	Sw	Sz	S1	S2	S3	S4	Hz	Hw	H1	H2	L	L1	L2	L3
10	190 PLUS	340	930	460	460	100	210	220	80	1400	1150	940	110	714	560	90	815
	250 PLUS	345	1030	460	570	100	210	220	80	1400	1150	940	110	714	560	90	815
	300 PLUS	350	1140	460	680	100	210	220	80	1400	1150	940	110	714	560	90	815
15	190 PLUS	340	930	460	460	100	210	220	80	1400	1150	940	110	714	560	90	815
	250 PLUS	345	1030	460	570	100	210	220	80	1400	1150	940	110	714	560	90	815
	300 PLUS	350	1140	460	680	100	210	220	80	1400	1150	940	110	714	560	90	815
20	190 PLUS	440	930	460	460	100	210	220	80	1400	1260	1000	110	883	670	105	815
	250 PLUS	440	1030	460	570	100	210	220	80	1400	1260	1000	110	883	670	105	815
	300 PLUS	450	1140	460	680	100	210	220	80	1400	1260	1000	110	883	670	105	815
25	190 PLUS	440	930	460	460	100	210	220	80	1400	1260	1000	110	883	670	105	815
	250 PLUS	445	1030	460	570	100	210	220	80	1400	1260	1000	110	883	670	105	815
	300 PLUS	450	1140	460	680	100	210	220	80	1400	1260	1000	110	883	670	105	815
30	190 PLUS	440	930	460	460	100	210	220	80	1400	1260	1000	110	883	670	105	815
	250 PLUS	445	1030	460	570	100	210	220	80	1400	1260	1000	110	883	670	105	815
	300 PLUS	450	1140	460	680	100	210	220	80	1400	1260	1000	110	883	670	105	815

Coupler	M1	M2	M3	M4	M5	M6
Diameter	6/4	1/2	6/4	1/2	3/4	6/4
Function	return from the installation	drain valve	flow of the installation	thermal release valve	safety valve	flow of the installation

Dimensions of STANDARD version

Firemax - STANDARD versions (with uncovered hopper)

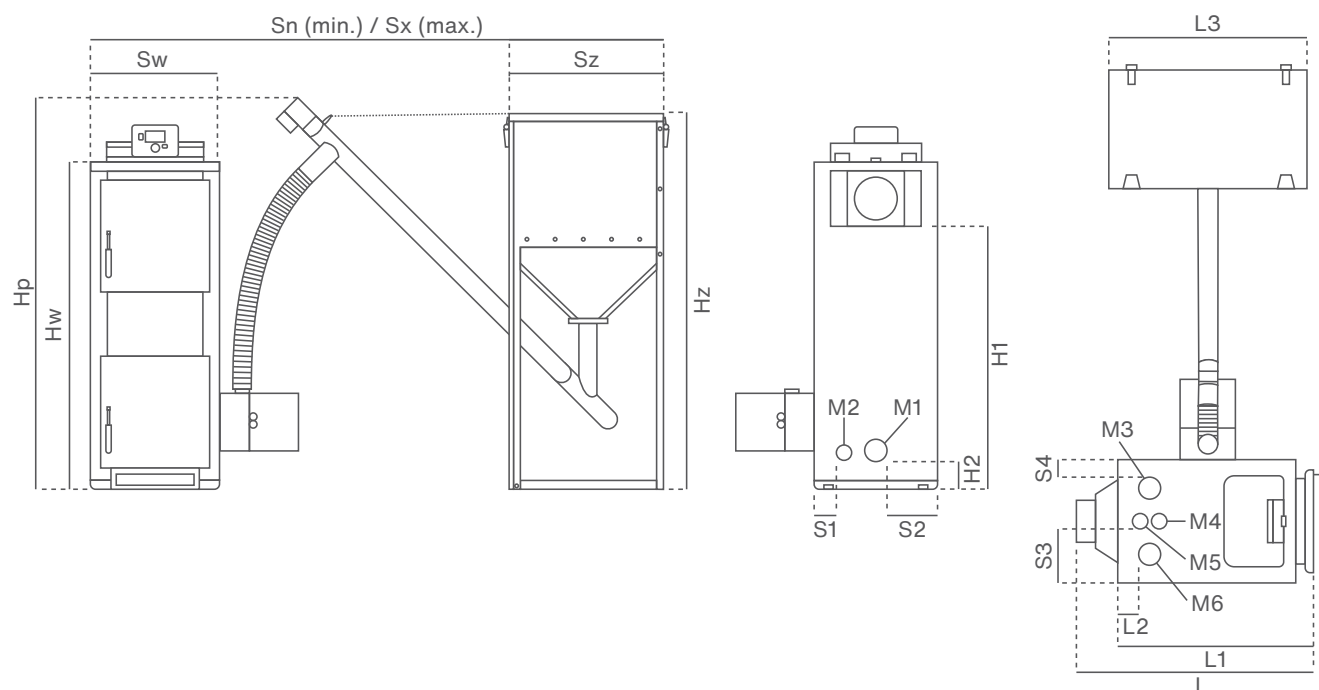


Dimensions [mm]																	
Power (kW)	Hopper	Weight (kg)	S	Sw	Sz	S1	S2	S3	S4	Hz	Hw	H1	H2	L	L1	L2	L3
10	190	312	930	460	460	100	210	220	80	1400	1150	940	110	714	560	90	815
	250	315	1030	460	570	100	210	220	80	1400	1150	940	110	714	560	90	815
	300	318	1140	460	680	100	210	220	80	1400	1150	940	110	714	560	90	815
15	190	312	930	460	460	100	210	220	80	1400	1150	940	110	714	560	90	815
	250	315	1030	460	570	100	210	220	80	1400	1150	940	110	714	560	90	815
	300	318	1140	460	680	100	210	220	80	1400	1150	940	110	714	560	90	815
20	190	412	930	460	460	100	210	220	80	1400	1260	1000	110	883	670	105	815
	250	415	1030	460	570	100	210	220	80	1400	1260	1000	110	883	670	105	815
	300	418	1140	460	680	100	210	220	80	1400	1260	1000	110	883	670	105	815
25	190	412	930	460	460	100	210	220	80	1400	1260	1000	110	883	670	105	815
	250	415	1030	460	570	100	210	220	80	1400	1260	1000	110	883	670	105	815
	300	418	1140	460	680	100	210	220	80	1400	1260	1000	110	883	670	105	815
30	190	412	930	460	460	100	210	220	80	1400	1260	1000	110	883	670	105	815
	250	415	1030	460	570	100	210	220	80	1400	1260	1000	110	883	670	105	815
	300	418	1140	460	680	100	210	220	80	1400	1260	1000	110	883	670	105	815

Coupler	M1	M2	M3	M4	M5	M6
Diameter	6/4	1/2	6/4	1/2	3/4	6/4
Function	return from the installation	drain valve	flow of the installation	thermal release valve	safety valve	flow of the installation

Dimensions of the STANDARD PSP

Firemax - STANDARD PSP versions (with extended feeding system)

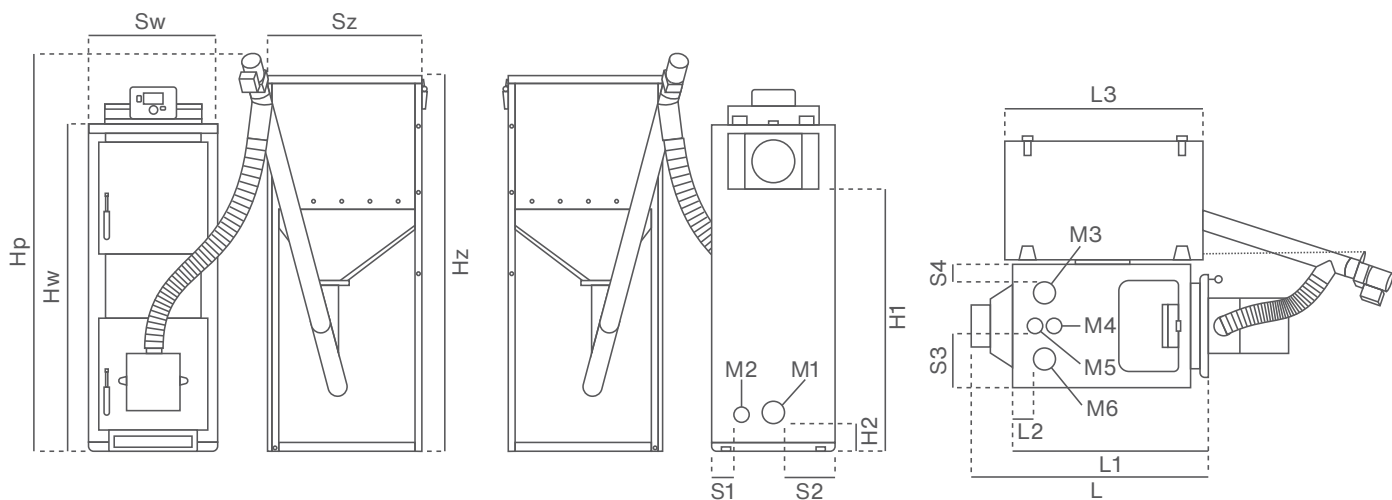


Dimensions [mm]																			
Power (kW)	Hopper	Weight (kg)	Sw	Sz	Sn	Sx	S1	S2	S3	S4	Hz	Hw	Hp	H1	H2	L	L1	L2	L3
10	190 PSP	312	460	460	1800	2560	100	210	220	80	1400	1150	1520	940	110	714	560	90	815
	250 PSP	315	460	570	1800	2560	100	210	220	80	1400	1150	1520	940	110	714	560	90	815
	300 PSP	318	460	680	1800	2560	100	210	220	80	1400	1150	1520	940	110	714	560	90	815
	750 PSP	343	460	1094	1995	2560	100	210	220	80	1380	1150	1520	940	110	714	560	90	1094
15	190 PSP	312	460	460	1800	2560	100	210	220	80	1400	1150	1520	940	110	714	560	90	815
	250 PSP	315	460	570	1800	2560	100	210	220	80	1400	1150	1520	940	110	714	560	90	815
	300 PSP	318	460	680	1800	2560	100	210	220	80	1400	1150	1520	940	110	714	560	90	815
	750 PSP	343	460	1094	1995	2560	100	210	220	80	1380	1150	1520	940	110	714	560	90	1094
20	190 PSP	412	460	460	1800	2560	100	210	220	80	1400	1260	1520	1000	110	883	670	105	815
	250 PSP	415	460	570	1800	2560	100	210	220	80	1400	1260	1520	1000	110	883	670	105	815
	300 PSP	418	460	680	1800	2560	100	210	220	80	1400	1260	1520	1000	110	883	670	105	815
	750 PSP	460	460	1094	1995	2560	100	210	220	80	1380	1260	1520	1000	110	883	670	105	1094
25	190 PSP	412	460	460	1800	2560	100	210	220	80	1400	1260	1520	1000	110	883	670	105	815
	250 PSP	415	460	570	1800	2560	100	210	220	80	1400	1260	1520	1000	110	883	670	105	815
	300 PSP	418	460	680	1800	2560	100	210	220	80	1400	1260	1520	1000	110	883	670	105	815
	750 PSP	460	460	1094	1995	2560	100	210	220	80	1380	1260	1520	1000	110	883	670	105	1094
30	190 PSP	412	460	460	1800	2560	100	210	220	80	1400	1260	1520	1000	110	883	670	105	815
	250 PSP	415	460	570	1800	2560	100	210	220	80	1400	1260	1520	1000	110	883	670	105	815
	300 PSP	418	460	680	1800	2560	100	210	220	80	1400	1260	1520	1000	110	883	670	105	815
	750 PSP	460	460	1094	1995	2560	100	210	220	80	1380	1260	1520	1000	110	883	670	105	1094

Coupler	M1	M2	M3	M4	M5	M6
Diameter	6/4	1/2	6/4	1/2	3/4	6/4
Function	return from the installation	drain valve	flow of the installation	thermal release valve	safety valve	flow of the installation

Dimensions of STANDARD FRONT

Firemax - STANDARD FRONT versions (with extended feeding system)



Dimensions [mm]																	
Power (kW)	Hopper	Weight (kg)	Sw	Sz	S1	S2	S3	S4	Hz	Hw	Hp	H1	H2	L	L1	L2	L3
10	190 FRONT	312	460	460	100	210	220	80	1400	1150	1520	940	110	714	560	90	815
	250 FRONT	315	460	570	100	210	220	80	1400	1150	1520	940	110	714	560	90	815
	300 FRONT	318	460	680	100	210	220	80	1400	1150	1520	940	110	714	560	90	815
15	190 FRONT	312	460	460	100	210	220	80	1400	1150	1520	940	110	714	560	90	815
	250 FRONT	315	460	570	100	210	220	80	1400	1150	1520	940	110	714	560	90	815
	300 FRONT	318	460	680	100	210	220	80	1400	1150	1520	940	110	714	560	90	815
20	190 FRONT	412	460	460	100	210	220	80	1400	1260	1520	1000	110	883	670	105	815
	250 FRONT	415	460	570	100	210	220	80	1400	1260	1520	1000	110	883	670	105	815
	300 FRONT	418	460	680	100	210	220	80	1400	1260	1520	1000	110	883	670	105	815
25	190 FRONT	412	460	460	100	210	220	80	1400	1260	1520	1000	110	883	670	105	815
	250 FRONT	415	460	570	100	210	220	80	1400	1260	1520	1000	110	883	670	105	815
	300 FRONT	418	460	680	100	210	220	80	1400	1260	1520	1000	110	883	670	105	815
30	190 FRONT	412	460	460	100	210	220	80	1400	1260	1520	1000	110	883	670	105	815
	250 FRONT	415	460	570	100	210	220	80	1400	1260	1520	1000	110	883	670	105	815
	300 FRONT	418	460	680	100	210	220	80	1400	1260	1520	1000	110	883	670	105	815

Coupler	M1	M2	M3	M4	M5	M6
Diameter	6/4	1/2	6/4	1/2	3/4	6/4
Function	return from the installation	drain valve	flow of the installation	thermal release valve	safety valve	flow of the installation

RAKOCZY®

RELIABLE WARMTH

Rakoczy Stal Sp. z o.o., 41 Grabskiego St., 37-450 Stalowa Wola, Poland
tel. +48 15 813 69 69, +48 669-659-394, e-mail: biuro@rakoczy.pl

www.rakoczy.pl

PART OF
HARGASSNER
GROUP 